

TEACH YOURSELF ENTERPRISE ARCHITECT IN 10 DAYS

AN INTRODUCTION TO THE FAMOUS
BUT AFFORDABLE MODELLING TOOL
ENTERPRISE ARCHITECT

BY PETER DOOMEN

AUTHOR OF
50 ENTERPRISE
ARCHITECT
TRICKS



Teach Yourself Enterprise Architect in Ten Days

An Introduction to the Famous and Affordable Modelling Tool Enterprise Architect

Peter Doomen

This book is for sale at <http://leanpub.com/EA-in-10-days>

This version was published on 2012-12-19

This is a Leanpub book. Leanpub empowers authors and publishers with the Lean Publishing process.

Lean Publishing is the act of publishing an in-progress ebook using lightweight tools and many iterations to get reader feedback, pivot until you have the right book and build traction once you do.

To learn more about Lean Publishing, go to <http://leanpub.com/manifesto>.

To learn more about Leanpub, go to <http://leanpub.com>.



©2012 Peter Doomen

Tweet This Book!

Please help Peter Doomen by spreading the word about this book on [Twitter](#)!

The suggested tweet for this book is:

<https://leanpub.com/EA-in-10-days>

The suggested hashtag for this book is [#EAin10days](#).

Find out what other people are saying about the book by clicking on this link to search for this hashtag on Twitter:

<https://twitter.com/search/#EAin10days>

Also By Peter Doomen

Fifty Enterprise Architect Tricks

Het Enigma in m'n Glas

GeneLab

Quiztig met Rock

Fotozoektocht door Lier

Who is agile? Volume 1

The Agile Quizzitch

Contents

An impossible assignment	1
First week	3
Week One. Monday.	3

An impossible assignment

“By the end of next week...” the words of our sales representative Alyssa ran through my head. This customer was clearly out of his mind. How could anyone, even an experienced consultant like myself, be able to build a full city map in ten days, documenting the business strategy and processes all the way down to the infrastructure architecture?

I decided to take a walk and think it over. What were the facts?

Fact one. I could not say ‘no’. This is an important customer for us. Business was not going well and if I did a good job, the customer would surely give more assignments to us.

Fact two. It was monday. I had to deliver this report on friday next week. So I had ten days to do my job: document the business strategy and processes, the functional architecture, the technical architecture, and a roadmap. This doesn’t look like something that is humanely possible.

But there were two advantages.

First advantage: I knew that there had been earlier attempts to document this customer’s architecture, be it only partially. I had even been involved for a short while! So I knew I could take a jump start and come up with a prototype in two or three days.

Second advantage: The customer, Vinimble, was not exactly a large organisation with hundreds of departments, processes and infrastructure components. Even then, a city map would consist of hundreds of elements, all linked to each other in various ways.

Considering these facts, I knew I would say “yes” to Alyssa’s request. And I knew I would use Sparx Systems Enterprise Architect to write my report. Why? Clearly Microsoft Visio was not an option: though simple to use, it would cause major overhead work once the enterprise architecture model started to grow, since Visio does not allow to “model once, use many”. But also some high-end tools were out of the question since it would be almost impossible to get budget for even a single license.

So I took my mobile phone, looked up Alyssa’s number, and confirmed my assignment. Then I ordered a license key for SparxSystems Enterprise Architect, which was in my mailbox seconds later...

First week

Getting to know the customer better and a city map prototype.

Week One. Monday.



Installing EA. Setting up my project, and reusing existing documentation to quickly build the first model. And discovering some nice features that confirm my choice for EA as a modelling tool.

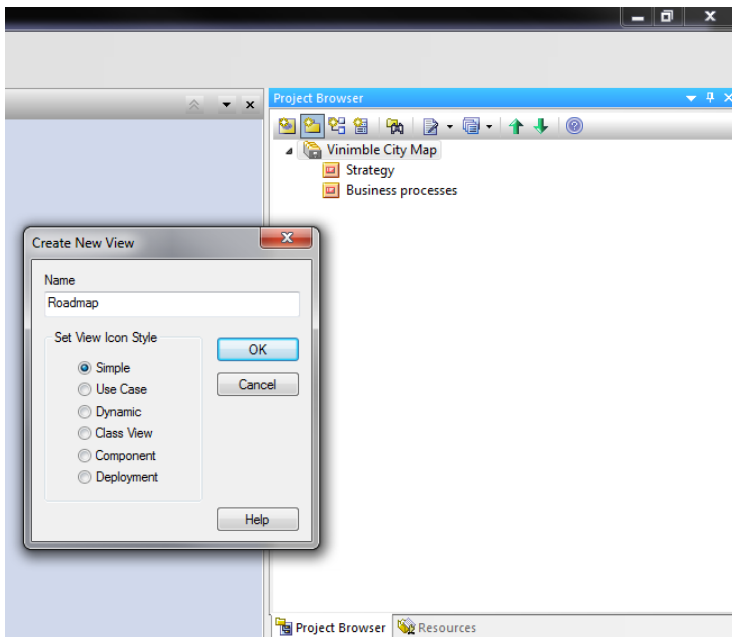
Installing EA

The installation of Enterprise Architect went smooth as a baby's skin. After the installation, I added my license key via [Help | Register and Manage License Keys...](#)

A quick look at the start screen then showed me what I needed: Create a New Project. I chose not to add any models, since I had a good idea of the model I wanted to build, and it would be custom.

The first real work: creating packages to organize stuff

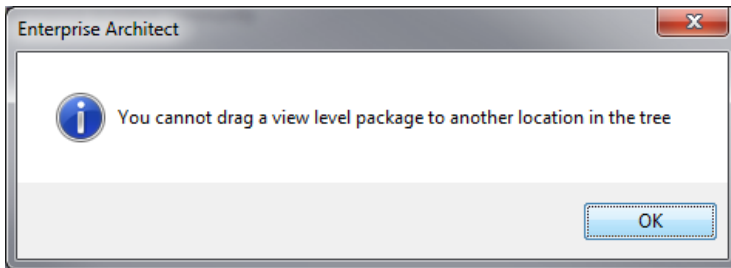
First, I changed the name “Model” in the Project Browser to “Vinimble City Map” since that would appeal to the customer more than the rather dull standard name. Then I started to create some packages underneath the project browser root: Strategy, Business Process and so on. I decided to use the icon for a “simple” view, but it’s easy to change that later via right click - “Set View Icon...”.



Adding packages under the model

Because these packages are directly under the project root, EA calls them “Views”. If you create a package under a view, it will be called just “package”.

Although you can reorganise packages later, it is worth the effort to think about the structure of your model beforehand. This will save you time. On top of that, it is useful to know that you cannot move a “view” (package directly under the root) to another view. You will get this error message:



Error message when trying to move a "view"

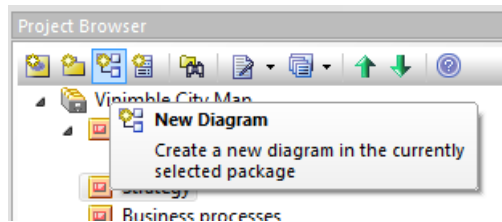
Of course you can create a new package under the destination package, move the contents of the view to the new package, and delete the old view to get exactly the same result.

If you create multiple views, you will see they appear in the project browser in reverse order. Luckily, it's easy to change that: just use the green arrow buttons at the top of the project browser to rearrange them one by one.

Repeating elements and connectors

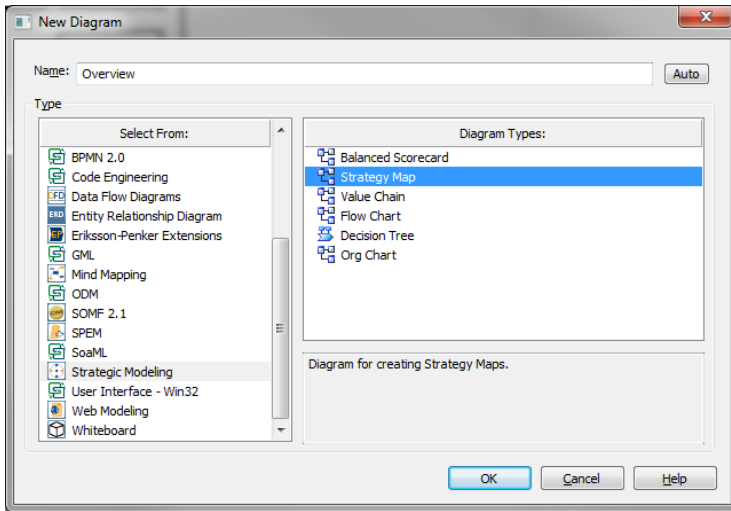
Now creating packages would be rather useless if we wouldn't create diagrams and elements. So that's what we are going to do.

First, create a diagram under a package, using the "new diagram" button of the project browser.



Creating a new diagram

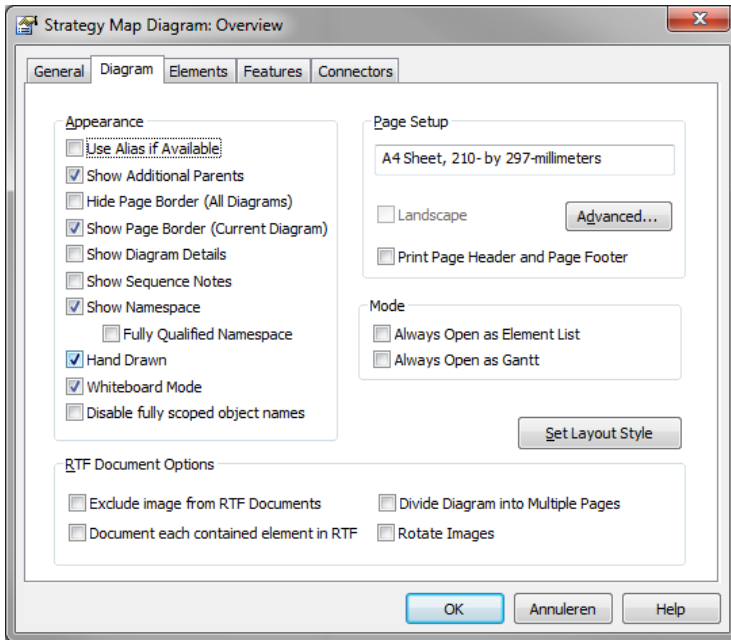
Let's start with making an overview of the Vinimble business processes. In the package "Business processes", create a package "Overview" and add a diagram of the type "Strategy modeling - Strategy Map".



A business process overview diagram

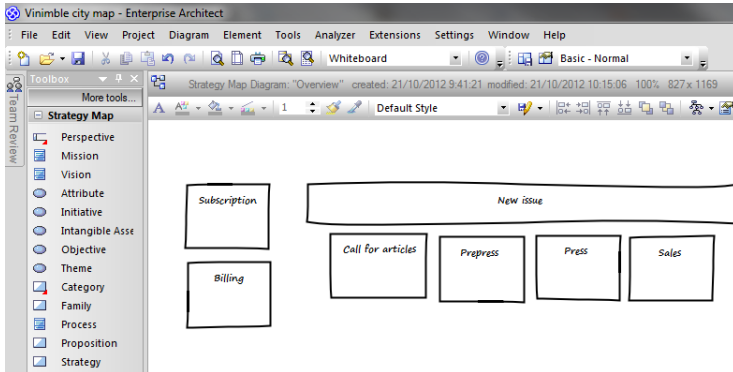
A recent EA feature I really like is the ability to create “hand drawn” diagrams that appear to be pictures of a whiteboard. Especially if you talk to nontechnical people, this type of diagram can take away their fear of technical mumble-jumble.

So let’s turn this business process overview diagram to whiteboard, hand drawn mode. Right click the diagram, choose “Properties” and go to the tab “Diagram” and tick the checkboxes “hand drawn” and “whiteboard”.



Hand drawn, whiteboard mode

You'll see the diagram turns white instead of the usual blue. Then add a few business processes by clicking the "process" element type in the strategy map toolbox. Give each business process an appropriate name and you have a diagram like this.



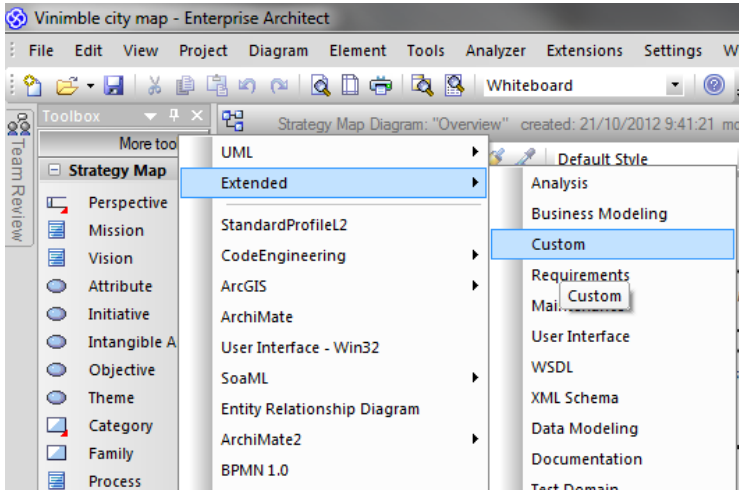
The resulting diagram



ctrl + click on the diagram creates a new element of the same type as the last element you created.

Is it clear from the diagram that the “New Issue” process is actually a group of processes? If you are just writing on a whiteboard, it might be enough to put them like this. But as an architect, I would rather like to formalize the relation between the “New Issue” process and the subprocesses like “call for articles” and “prepress”.

That’s were connectors come into play. From the “More tools” bar on top of the toolbox, choose “Extended - Custom” to open the toolbox “Custom”.



Opening a toolbox

Click on the “aggregate” relationship (it looks like a diamond on a stick). Then click a subprocess and drag to the main process “New Issue”.



F3 repeats the last connector: press F3 then click a subprocess, drag to the main process without going to the toolbox.

The diagram now looks like this:

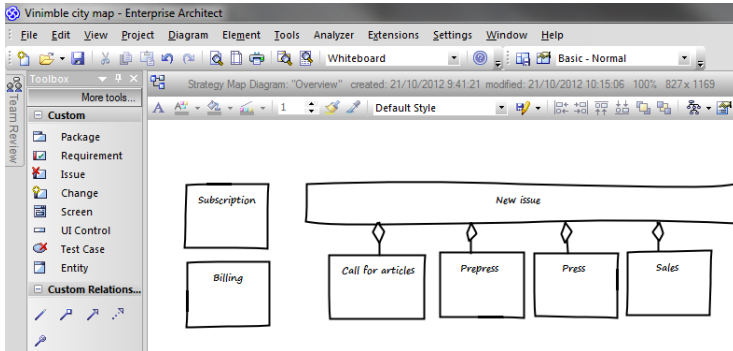


Diagram with connectors

Nesting and parent-child relationships

The business process overview so far looks OK for those who know the “aggregate” relationship. So typically not those who will review this diagram.

So we will use a more informal way of saying that the subprocesses belong to the main process, and that is by nesting them.

To achieve that, just drag the handles of the main process until the subprocesses fit.

Enterprise Architect will automatically

- make the “aggregate” relationships disappear
- adapt the z-order of the elements so that the main process doesn't cover the subprocesses

- indicate that the subprocesses belong to the main process by adding the text “New issue:” before each subprocess
- rearrange the elements in the project browser so that the subprocesses are hierarchically under the main process. (this only happens when support for composite elements in the “Tools | Options” window is on)

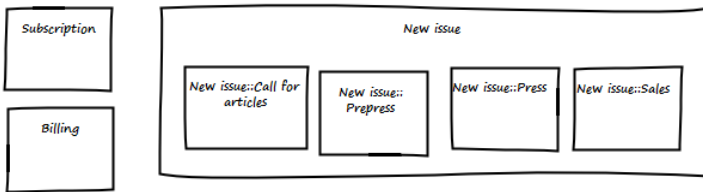
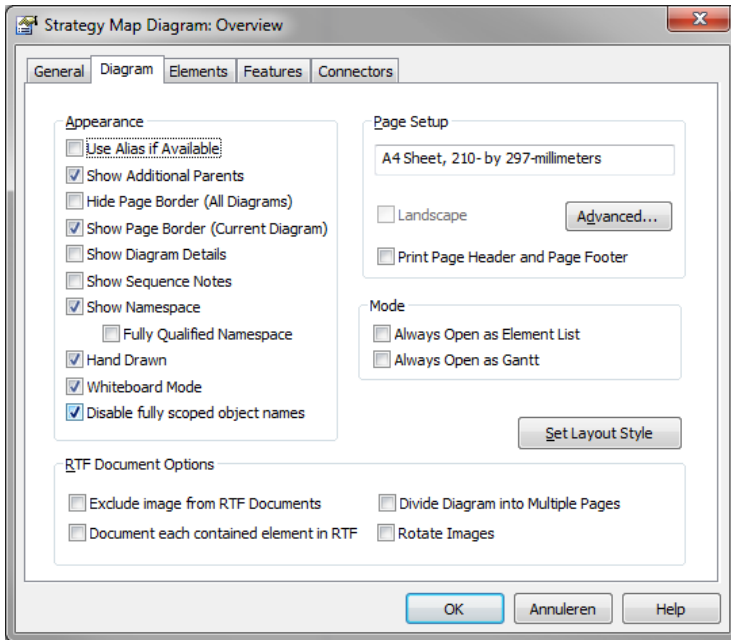


Diagram with implicit connectors

Of course, the aggregate relationships are not gone: confirm this by dragging a subprocess out of the main process. The aggregate relationship reappears.

If you find the “New issue:” marker before each subprocess name disturbing, you can put it off by right clicking the diagram and ticking the checkbox “Disable fully scoped object names”.

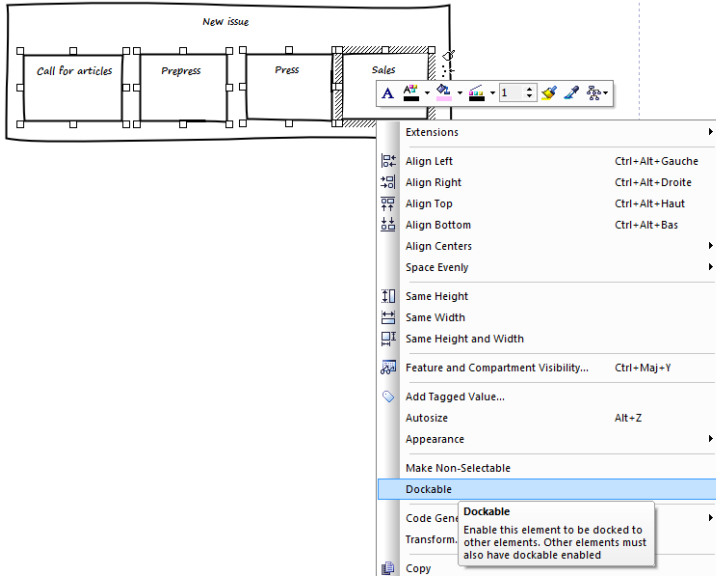


Removing the name of the parent

Docking elements

Nice diagram, but we can still improve it. Suppose our business process overview is complete and it consists of nearly hundred processes and subprocesses. It would hardly fit on one sheet of paper, wouldn't it?

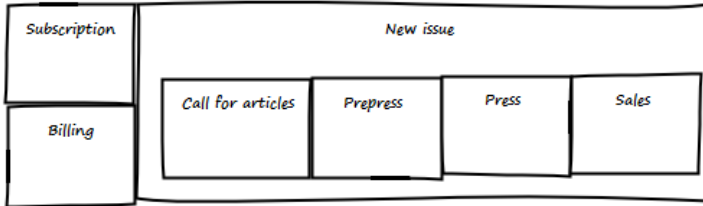
Apart from resizing the elements so they take up less space, we can also prevent space getting lost between the elements. We will use the docking feature for that:



The docking menu

- First, select the elements to dock (ctrl+click will select multiple items)
- Then, right click and choose “Dockable”
- Last, drag the element one by one to their neighbor.

The resulting diagram looks like this.



Docked elements



Phew, hard work for the first day! Now getting some well-deserved sleep...