

## 移步云端，全面深度管理 — BIM 360 最新动态

梁晓冬

DevTech 中国区经理

开发技术支持部 (DevTech)

[Xiaodong.liang@autodesk.com](mailto:Xiaodong.liang@autodesk.com)

注：相关视频可访问**BIM 360** 网站

- <http://www.autodesk.com/products/bim-360/overview>

# 日程安排

- BIM 360 Glue 和 BIM 360 Field
- Glue 和 Field API

# Glue

# BIM 360 云端集成解决方案

## BIM 360 服务



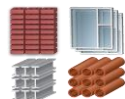
模型数据管理



协调和质量控制



模型检查和协作



算量和资源



工程进度和计划任务



放样和验收



施工文档



交付

## BIM 360 互联网访问



Engage the extended team

## BIM 360 移动



BIM



Field

Targeted apps for the field

## 模型聚合



支持业界50多种CAD数据格式

Rich functionality for power users

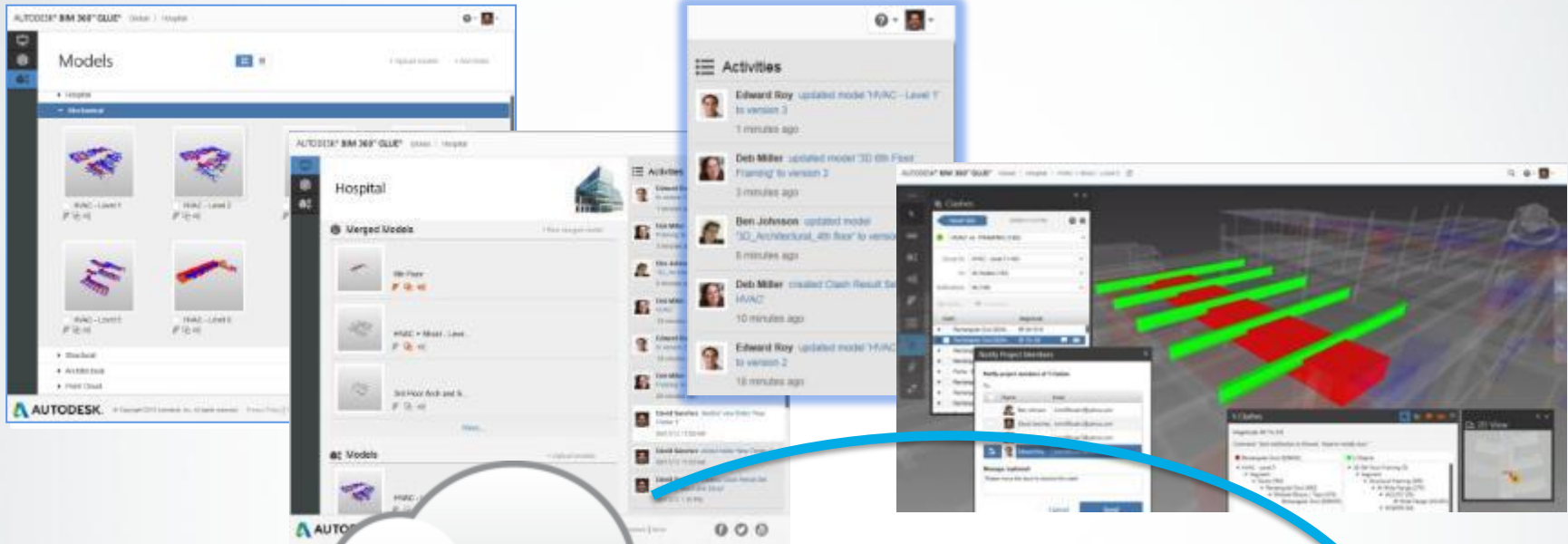
## 商业过程集成



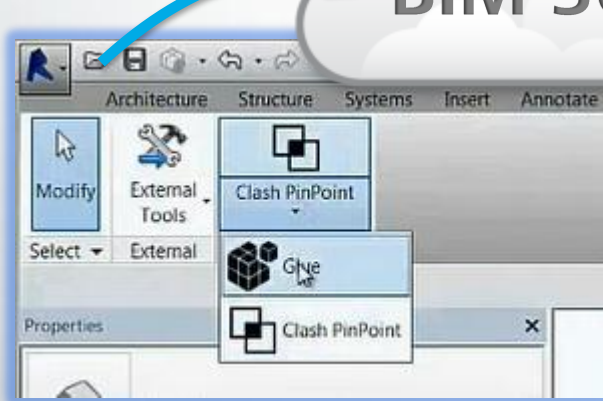
# BIM 360 现有产品



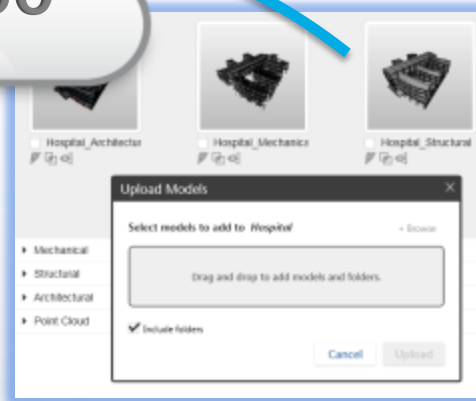
# BIM 360 Glue workflow



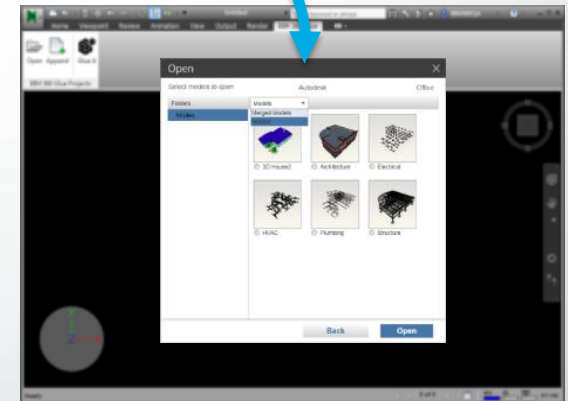
BIM 360



Glue directly from Revit, AutoCAD, AutoCAD Civil 3D



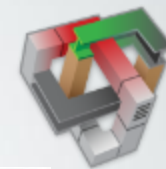
Drag and Drop 50+ model formats



Navisworks – open from BIM 360



# BIM 360 Glue 移动管理



- 随时随地-在线或离线
- 反复检查，问题标记
- 测量，误差检查
- 查看对象属性
- 虚拟现实的查看

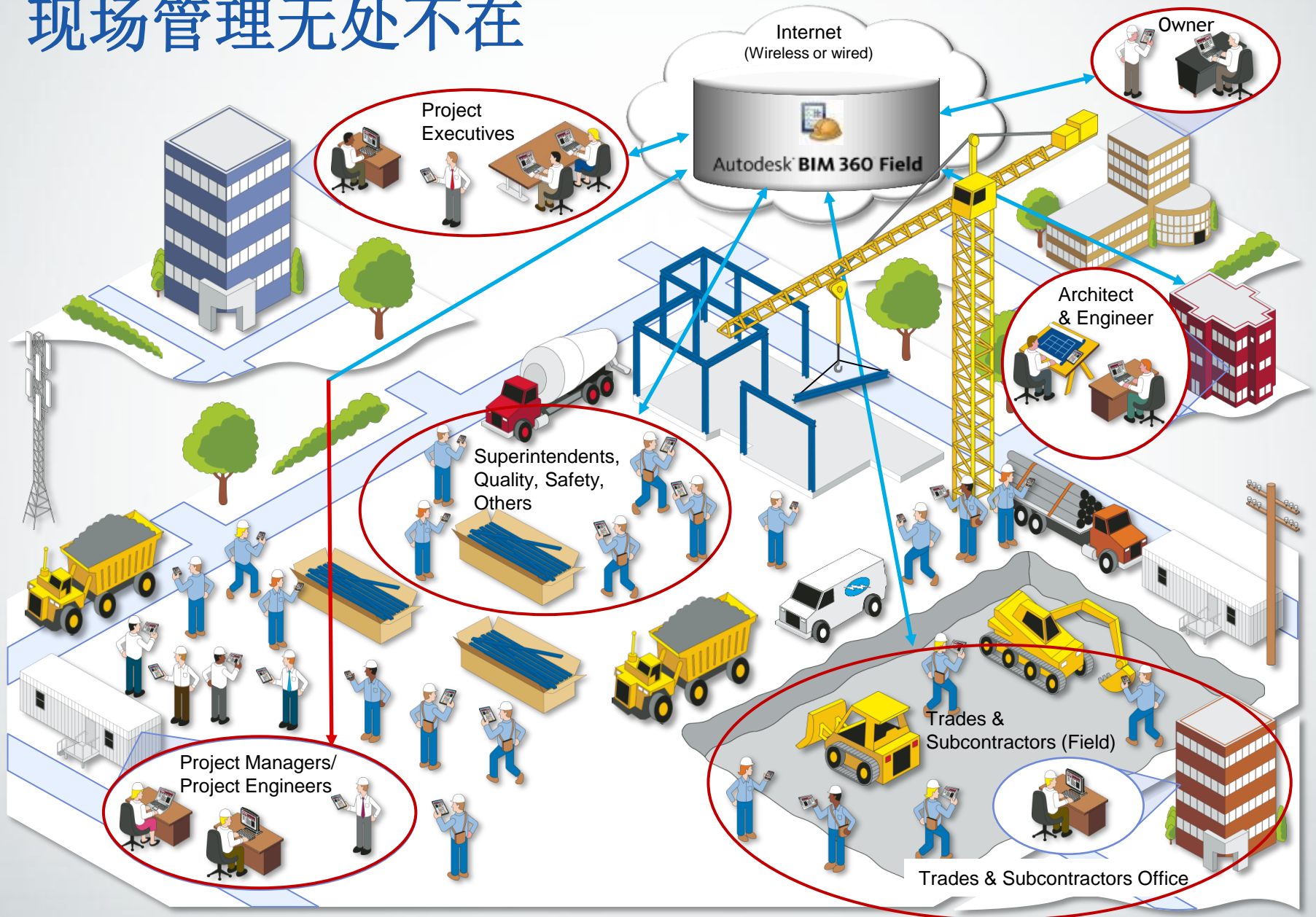


Jenea Brenner, Project Engineer at Bernards, using BIM 360 Glue on the Mira Costa High School Project. Image courtesy of Sebastian Choularton, Bernards



# Field

# 现场管理无处不在



# BIM 360 Field – 现场管理革命性的改变

需要做什么



质量控制



安全控制



施工现场文档查看



试运营和竣工交付: Field BIM®

怎么做



在线和移动终端文档库



全公司各层级问题清单模板



待完成问题和任务追踪



运营和分析报告

关键技术

移动终端 (断网情况下使用)



iPad



智能手机

云计算



无限的存储空间和使用人数

网页界面



任何人在可以访问无线网的情况下都能使用

收集

管理

报表

# BIM 360 Field - 让需求成为现实



- 为整个建筑项目服务
- 质量，安全，文档管理，进度图，交付状态追踪
- 模型与现场数据可相互关联，检查进度和问题
- 分析报告，进度图和实时项目审查



# BIM 360 未来





# 产品应用客户案例



Turner Construction Company uses Autodesk BIM 360 Glue to help keep a complex construction project on track at the Oakland International Airport.





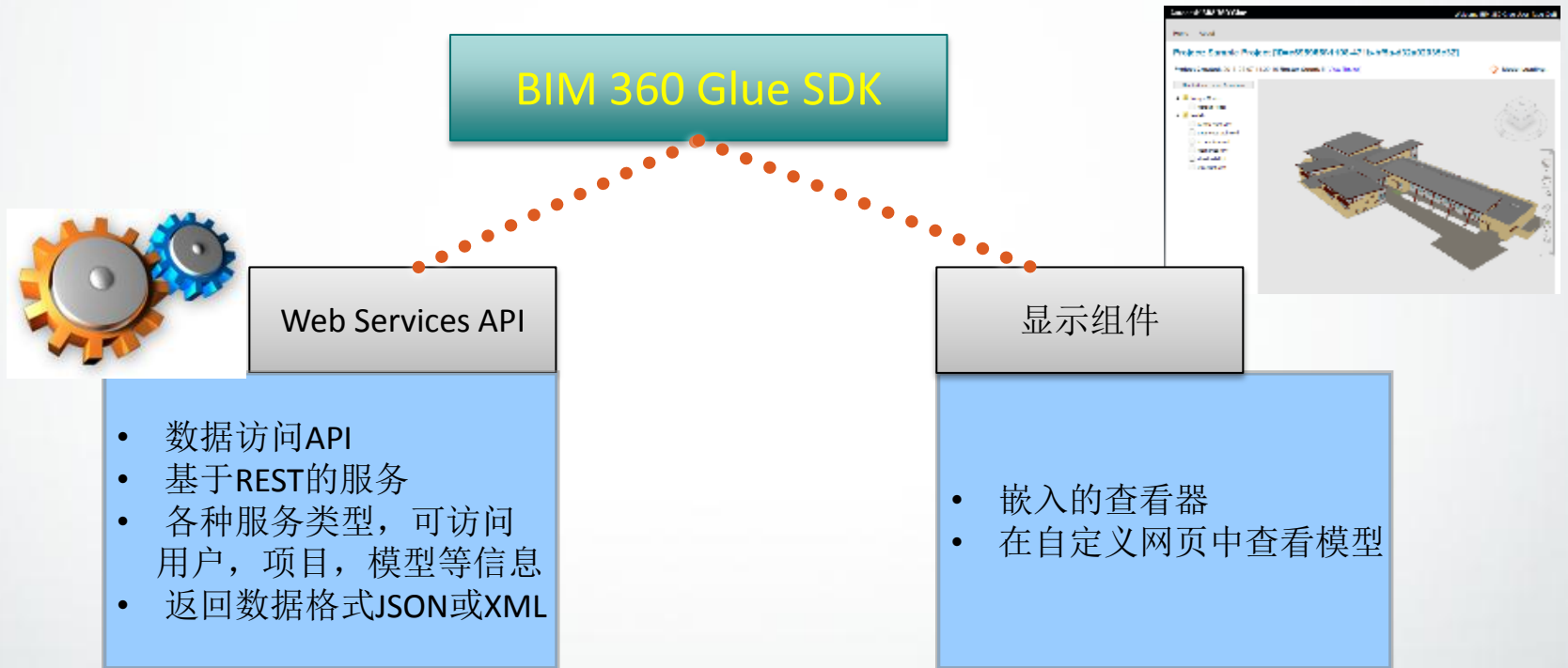
# 产品应用客户案例



# Glue API

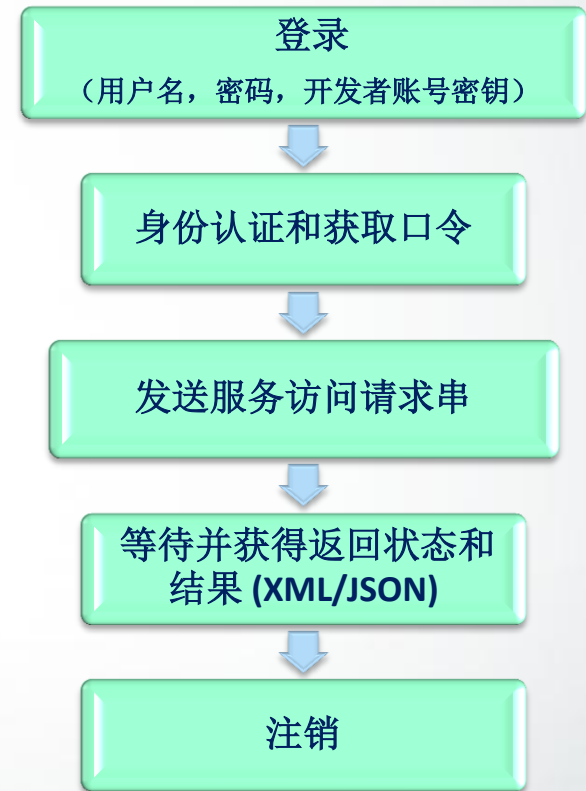
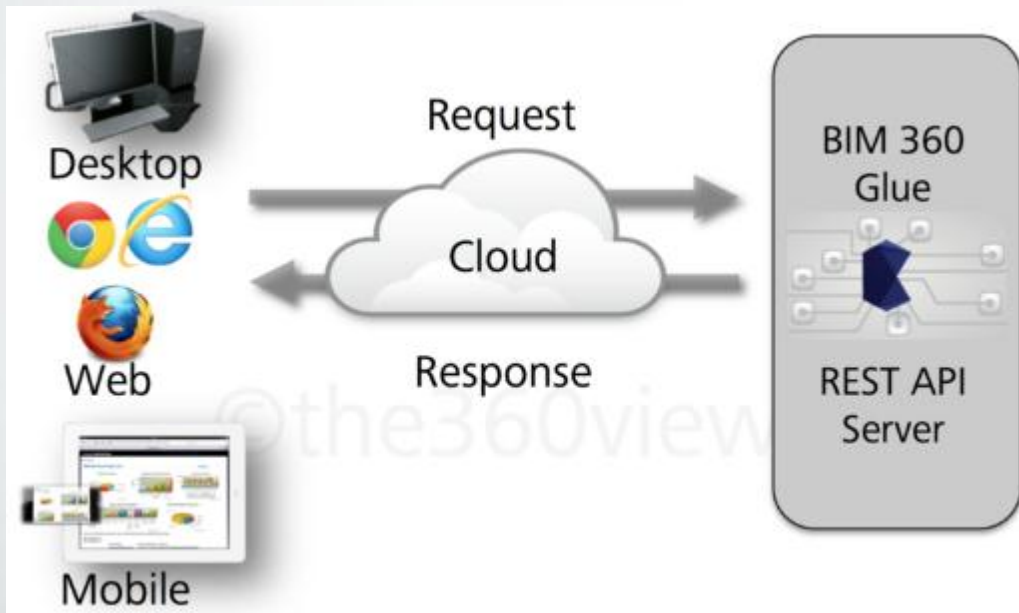
# Glue API

'SDK' – 云上的API



# Glue API

## web service workflow

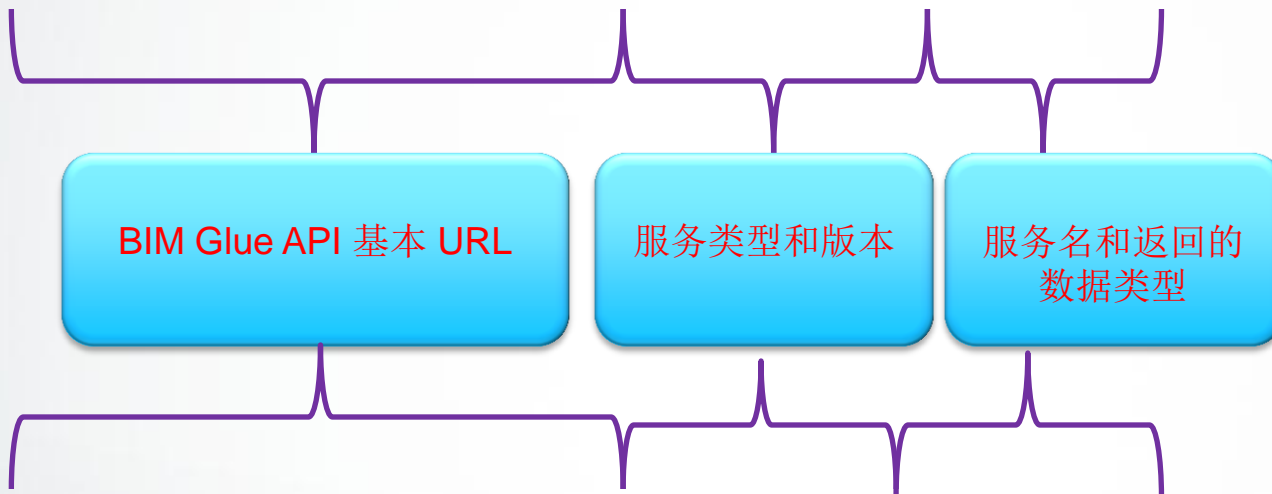


# Glue API

## web service 服务端点地址

- 登录

<https://b4.autodesk.com/api/security/v1/login.json>



- 获取模型信息

<https://b4.autodesk.com/api/model/v1/info.xml?>

# Glue API

web service 发送请求的url

- 获取某模型信息

<https://bim360.autodesk.com/api/model/v2/info.json?>

company\_id={公司Id}  
& api\_key={api 密钥}  
& auth\_token={口令}  
& timestamp={时间戳记}  
& sig={签名}  
& model\_id={模型id}  
& version\_id={版本id}





# Glue API

## web service 获得响应 - json

```
{ "project_list":  
  [  
    {  
      "folder_tree":null,  
      "project_roster":null,  
      "project_id":"The BIM 360 Glue Project ID",  
      "project_name":"The name for the project (URL Encoded)",  
      "company_id":"The Company ID for the Project",  
      "created_date":"The date the Project was added",  
      "modify_date":"The date the Project name was last modified",  
      "start_date":"The date the Project was started",  
      "end_date":"The date the Project ends",  
      "last_activity_date":"The last date there was Project activity"  
    },  
    {  
      "folder_tree":null,  
      "project_roster":null,  
      "project_id":"The BIM 360 Glue Project ID",  
      ...  
    }  
  ],  
  "page":1,  
  "page_size":2,  
  "total_result_size":2,  
  "more_pages":0  
}
```



Glue

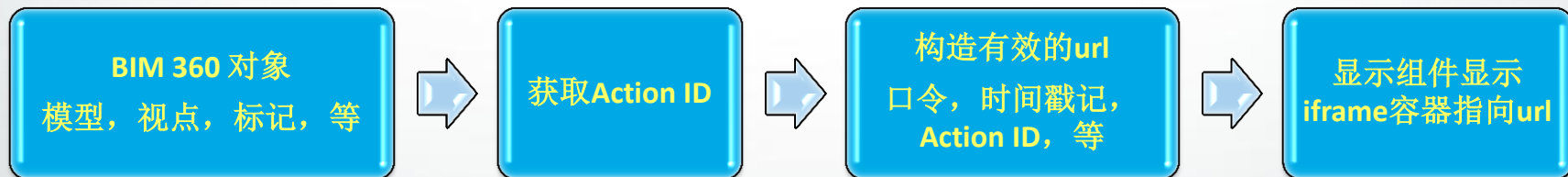


获取响应

# Glue API

## 显示组件

- 支持 IE, Google Chrome, 和 Firefox .
- 基于Autodesk现有的技术。使用Navisworks viewer内核
- 可操作选择集
- 显示流程



# Glue API

## 显示组件-容器

```
<iframe title="BIM 360 Glue Viewer Component" width="800" height="600"  
src="glue_display_component_url..." frameborder="0"  
allowfullscreen></iframe>
```

URL +=

https://b2.autodesk.com? +

"api\_key=" + api\_key +

"&timestamp=" + timestamp +

"&sig=" + sig +

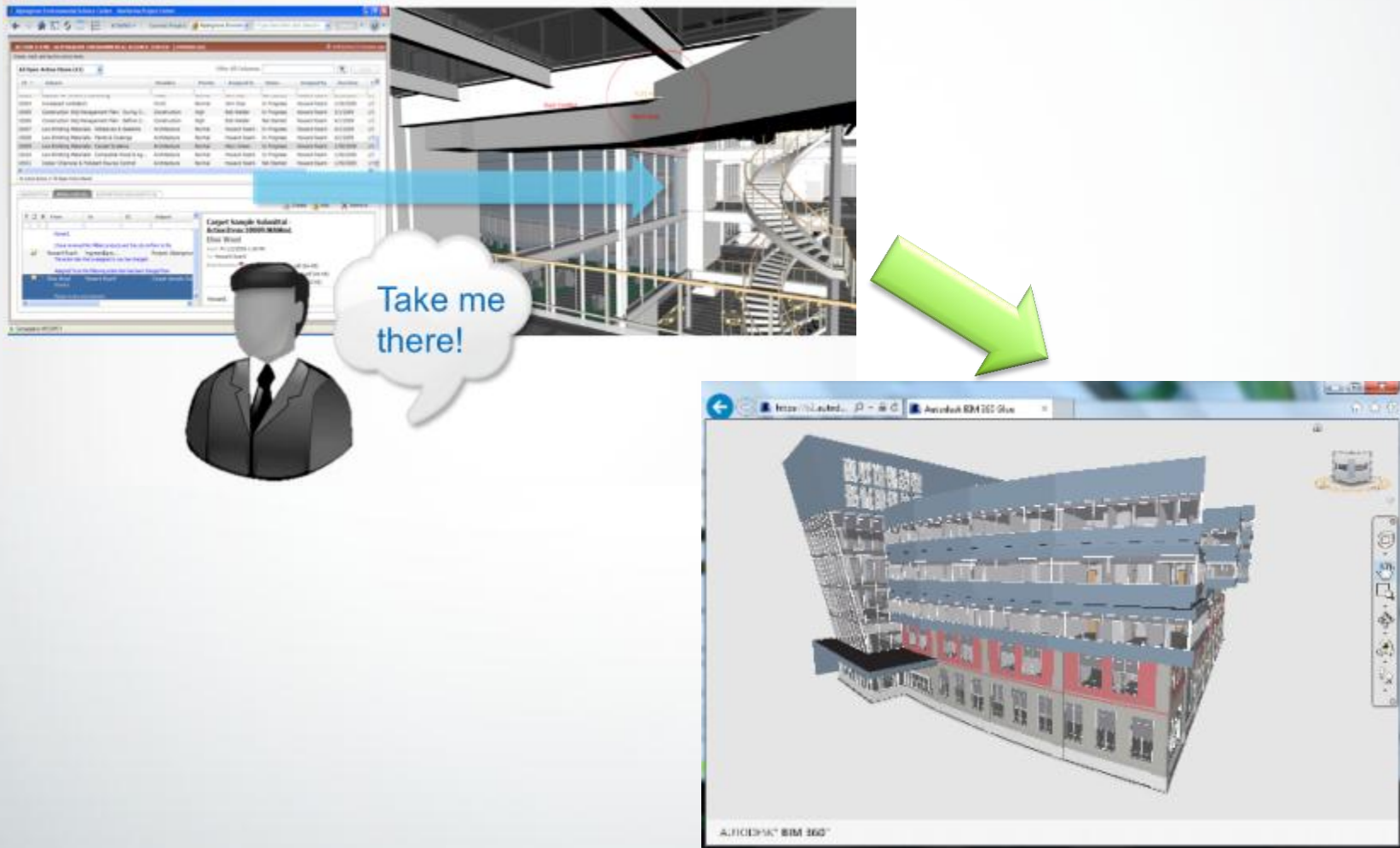
"&company\_id=" + company\_id +

"&auth\_token=" + auth\_token +

"&runner=embedded/#" + company\_id + "/" + project\_id + "/" + model\_id

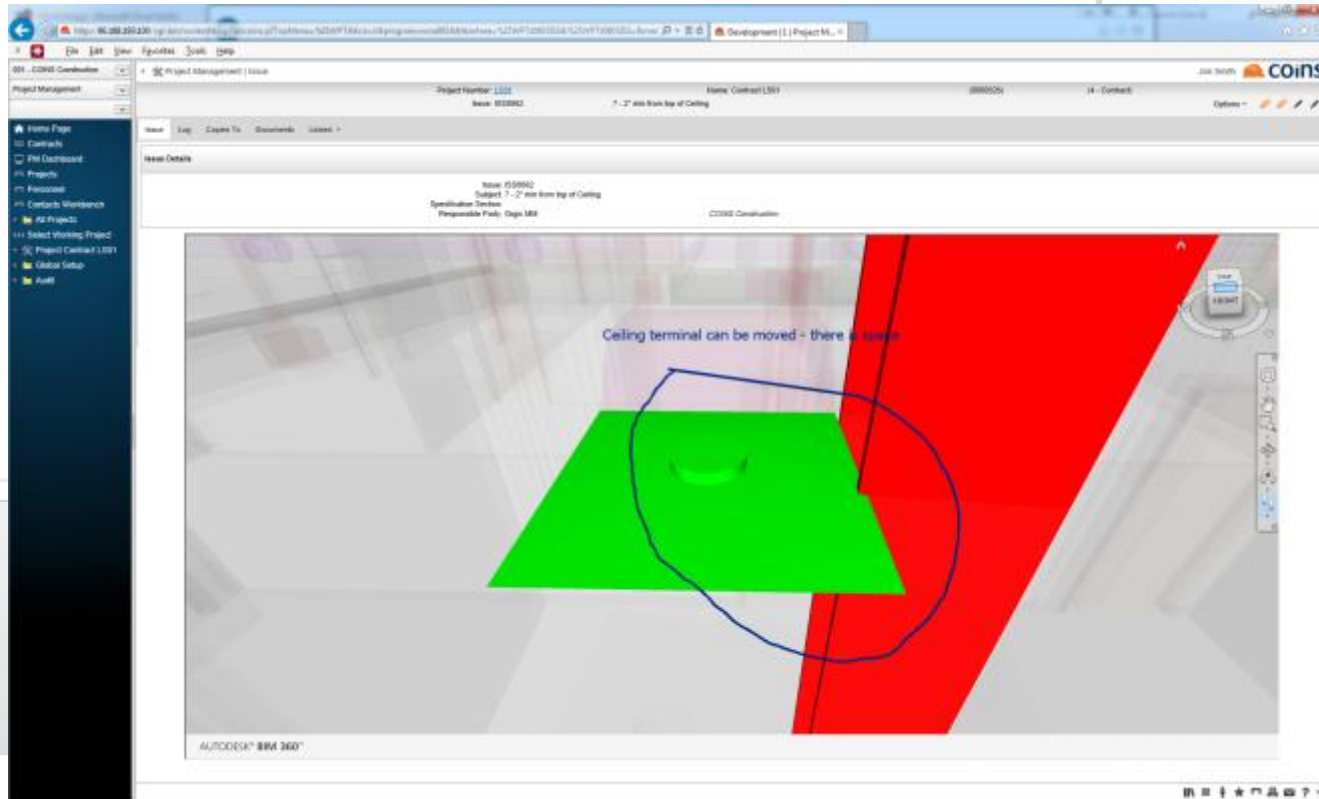
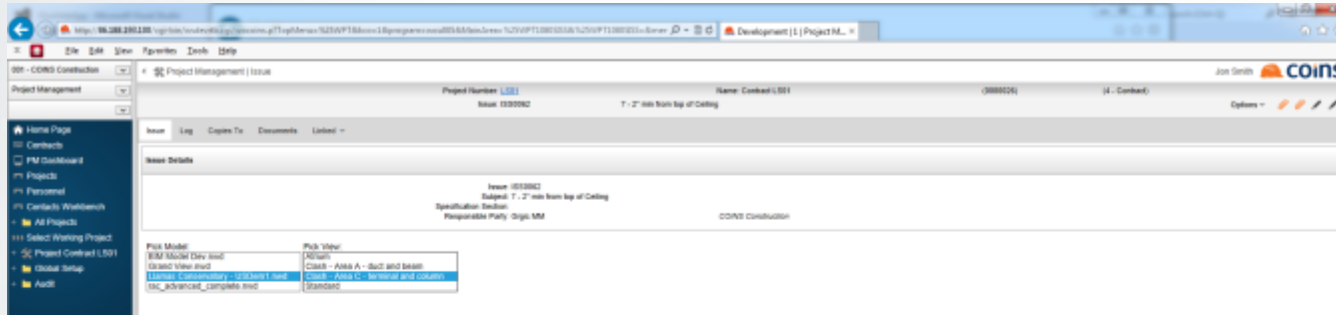
# Glue API

## 常用 workflow



# Glue API

## 客户案例 - COINS



# Glue API

## 客户案例 - IMAGINiT



### IMAGINiT与Autodesk BIM 360 Glue 集成

IMAGINiT Clarity 2015 能自动的提交Revit模型到Glue，用户可以直接在Clarify里查看模型。通过这样的无缝链接，以前多工种的数据聚合一步搞定。这样的功能进一步的提升项目协作，减少设计错误，增加盈利。





# ADN GLUE PROJECT MANAGEMENT

## LOG IN

### Account Information

Username:

Password:

Log In

# GLUE SDK - WEB APP SAMPLE

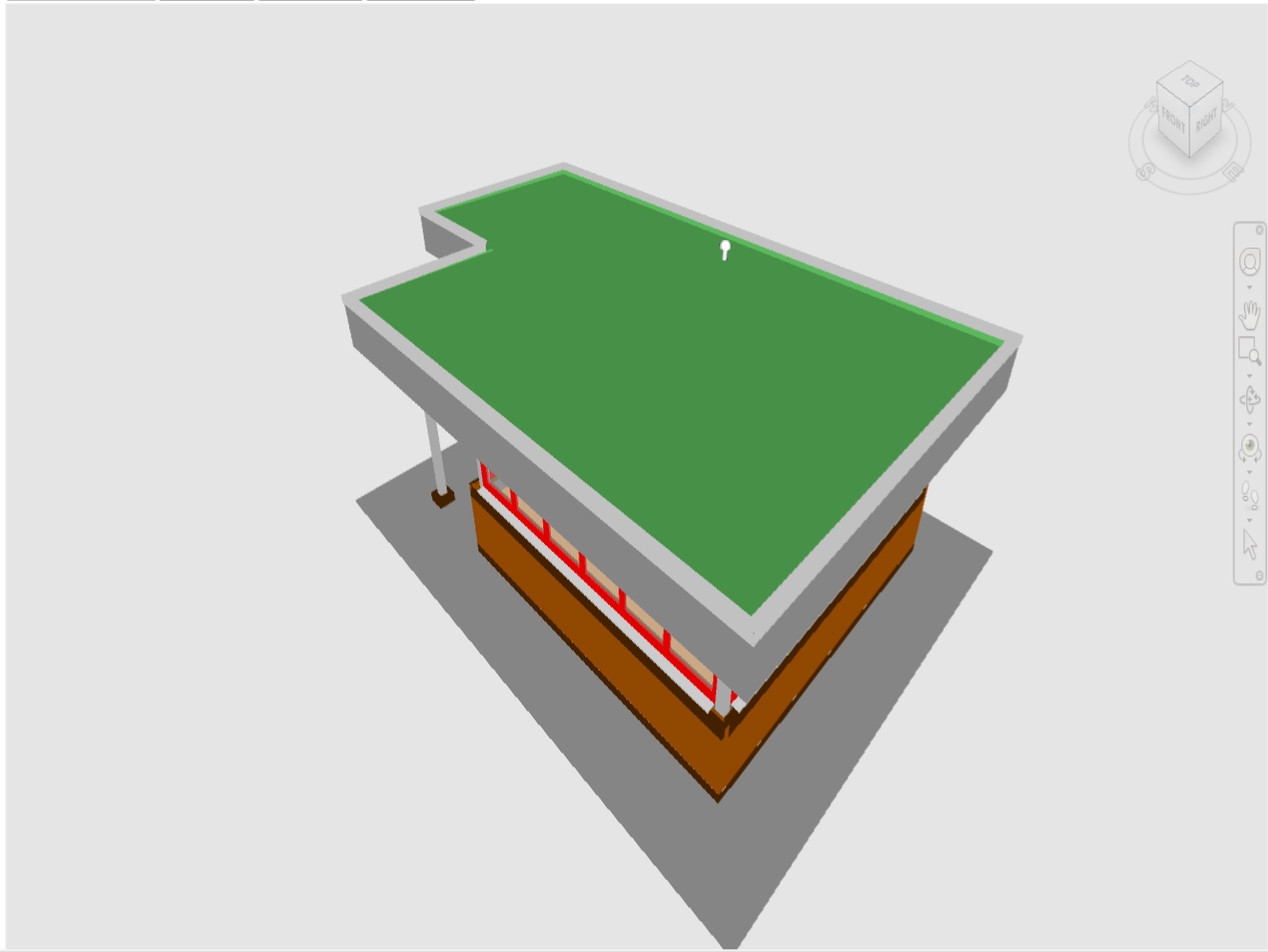
Welcome [xiaodong.liang@autodesk.com!](#) [ [Log Out](#) ]

Projects

Show Properties Module:

## SELECT AN ACTIVITY

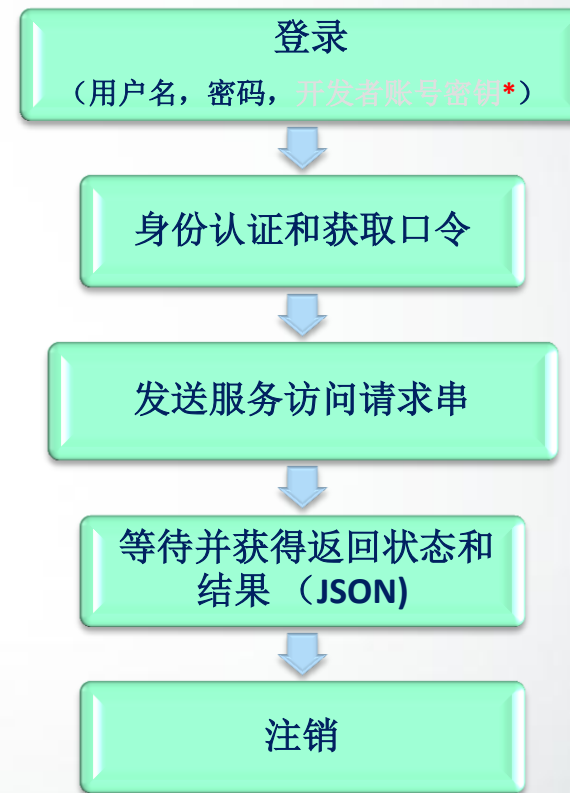
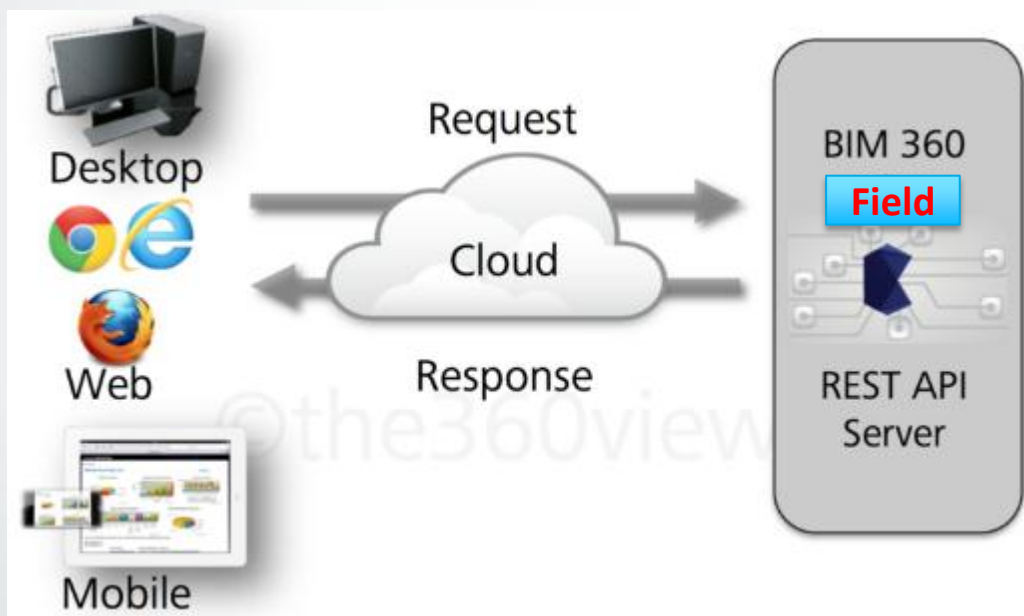
- Downloaded Model, gatehouse\_pub
- Downloaded Model, gatehouse\_pub**
- Uploaded New Model, sheetmetal
- Uploaded New Model, ice stadium
- Added View, view2
- Added View, view1
- Uploaded New Model, gatehouse\_pub
- Added View, Entrance View
- Created Merged File, Merged Model
- Uploaded New Model, Mechanical
- Uploaded New Model, Architectural
- Uploaded New Model, Structural



# Field API

# Field API

## workflow



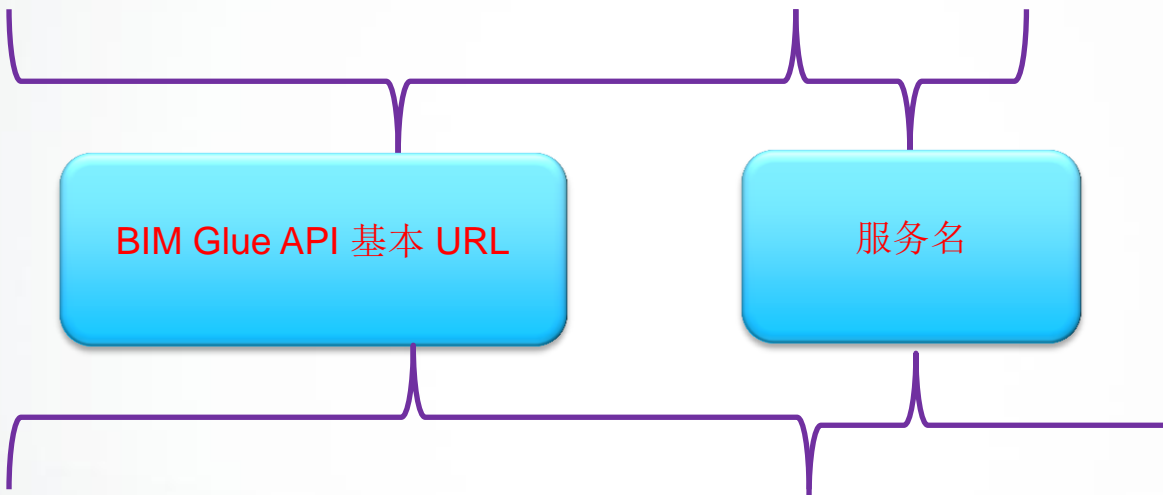
\* 目前只需要用户名和密码使用，未来会需要API密钥，时间戳记等安全要素。

# Field API

## 服务端点地址

- 登录

<https://manage.velasystems.com/api/login>



- 获取Issues

[https://manage.velasystems.com/api/get\\_issues](https://manage.velasystems.com/api/get_issues)

# Field API

web service 发送请求的url

- 获取Issue信息
- [https://manage.velasystems.com/api/get\\_issues?](https://manage.velasystems.com/api/get_issues?ticket={口令}&project_id={项目Id}&issue_filter_id={Issue 过滤条件})  
ticket={口令}  
&project\_id={项目Id}  
&issue\_filter\_id={Issue 过滤条件}



Field

发送请求

# Field API

web service 获得响应 - json

```
Viewer Text
JSON
0
  commented_at : ""
  document_folder_references
    backcharge_cost : null
    due_date : "2013-10-25 00:00:00 +0000"
    issue_type : "QA/QC : QA/QC"
    status : "Open"
    method : "simple"
    daily_output : null
    backcharge : false
    created_at : "2013-10-25 14:12:42 +0800"
    has_pushpin : false
  custom_field_values
    issue_type_id : "992aa3b5-97ce-11e2-a4be-02cc3afa57bd"
    labor_hours : null
    crew : ""
    issue_id : "16cb1f36-3d3a-11e3-89a6-02cc3afa57bd"
    closed_at : ""
    release : ""
    currency : "USD"
    bare_labor_cost : null
    parent_source_type : ""
  comments
  attachments
    cost_with_op : null
    pushpin : null
  uri_references
    created_from : "web"
```

Field

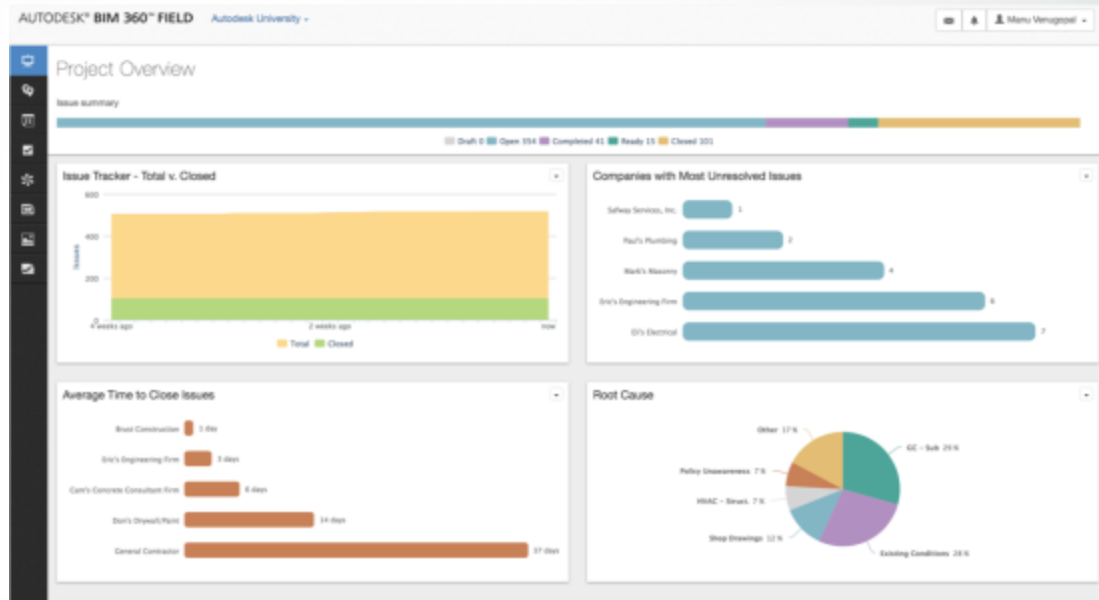
获取响应



# Field API

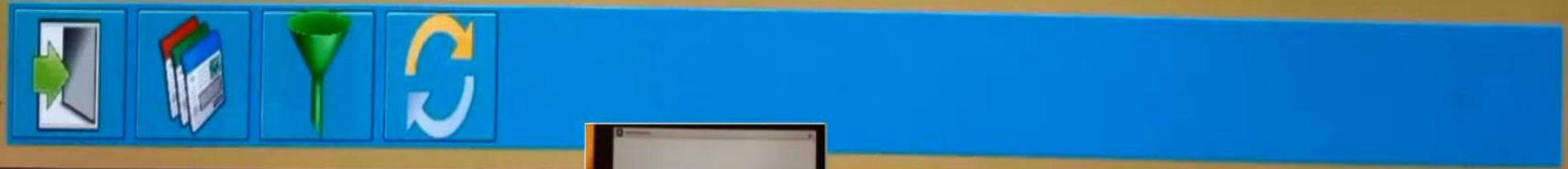
常用场景

## ■ 管理平台



## ■ 集成环境

例: Vault与Field集成



00:00:00

# 参考资料

- [Glue 和 Field 博客](#)
- [Glue 产品在线帮助](#)
- [Glue API 在线帮助](#)
- [Field 产品在线帮助](#)
- [Field API在线帮助](#)



Autodesk is a registered trademark of Autodesk, Inc., and/or its subsidiaries and/or affiliates in the USA and/or other countries. All other brand names, product names, or trademarks belong to their respective holders. Autodesk reserves the right to alter product and services offerings, and specifications and pricing at any time without notice, and is not responsible for typographical or graphical errors that may appear in this document.